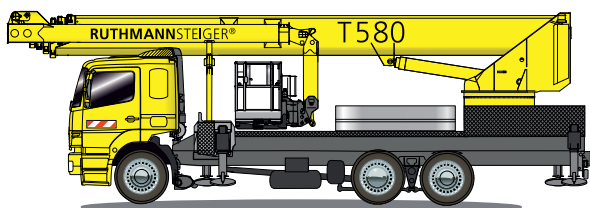




**RUTHMANN**  
professionals at work

## STEIGER® T 580



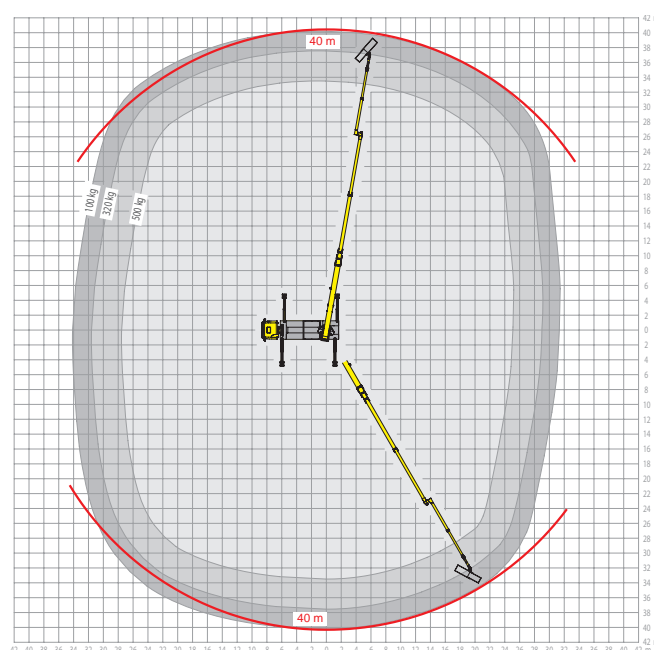
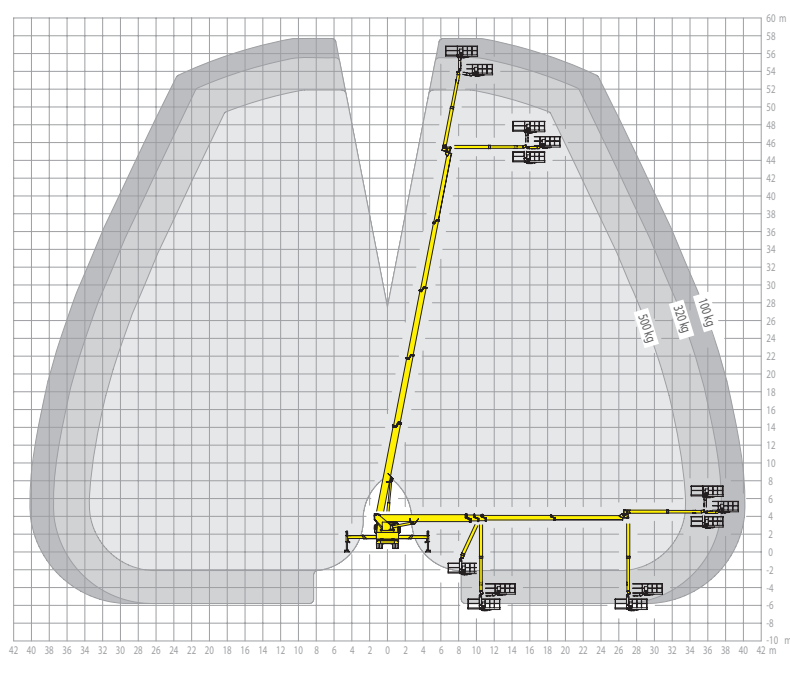
### RUTHMANNSTEIGER® T 580

Top of the class on a triple axle chassis

- 58 m working height
- 40 m outreach
- standard triple-axle chassis
- total vehicle length only 11.70 m
- maximum performance through "Innova-Round-Profile-Boom-Technology"
- working also „behind“ objects thanks to movable jib (RUSSEL®)
- 500 kg cage load capacity
- working below ground level is possible
- cage can be entered and loaded from ground level
- automatic set-up and retraction mechanism at the touch of a button
- aluminium working cage, hydraulically extendable, with two access doors
- low-maintenance boom system
- variable jacking widths thanks to the double horizontal/vertical jacking mechanism
- information and diagnostic system with large graphic display located in the working cage and at the secondary control panel
- and many other innovative functions



For further information go to: [www.ruthmann.de/t580en](http://www.ruthmann.de/t580en)





**RUTHMANN**  
professionals at work

## STEIGER® T 580

Until now aerial platforms capable of reaching heights of over 55 metres have been rather colossal. With the innovative STEIGER® T 580, featuring a 58 metre working height, we have remedied the size problem.

Maintenance and repair works carried out at high and hard to reach places including cleaning glass surfaces or billboards, exchanging lights, banners and electrical cables as well as a wide variety of assembly projects: Difficult tasks such as these are easy to accomplish with the STEIGER® T 580, thanks to its exceptional performance data.

The STEIGER® T 580 owes its extraordinary performance data to the innovative telescoping boom system with "round profile" technology developed by RUTHMANN.

A special plus factor of the STEIGER® T 580 is the available variety of carrier chassis: e.g. a triple axle chassis with trailing axle reduces the turning circle and permits easier steering. With a total vehicle length of only 11.7 metres, a width of only 2.55 metres and a height of 3.99 metres, it is easy to see why the STEIGER® T 580 is capable of performing in even the tightest conditions. Thanks to these compact dimensions, the STEIGER® T 580 is also able to manoeuvre through narrow entrance ways with ease.

The impressive performance data of the STEIGER® T 580 as well as the standard triple axle chassis make this unit so unique. The STEIGER® T 580 is simply one of a kind in the aerial platform business.

### Advantages of the T 580:

#### a) an innovative round profile boom system

The new telescoping boom system with "round profile" technology in load direction is truly innovative. The advantages include sturdy steel construction, greater buckling strength, lighter boom system with enhanced performance capabilities, wide gliders, smooth and stable boom operation.



#### b) 40 metre outreach:

The 40 metre outreach of the STEIGER® 580 is achieved through its sophisticated telescoping system and the double (horizontal & vertical) jacking mechanism made from fine-grained steel.

#### c) variable jacking:

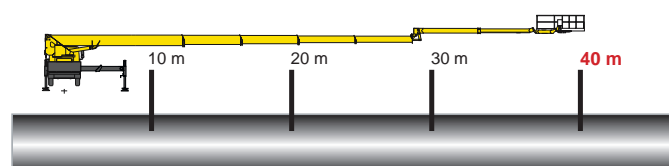
Jacking can occur anywhere regardless of ground conditions. The STEIGER® control system automatically assigns the ideal area of operation.

#### d) maximum versatility obtained through rotating jib:

For maximum versatility of the boom system, the STEIGER® T 580 is equipped with an agile telescoping lower and upper boom as well as a movable jib

(called RÜSSEL® at RUTHMANN) featuring an hydraulically extendable telescoping working cage. This extremely versatile jib enables tasks to be performed easily "behind" objects.

Please contact us – by phone, fax or e-mail. We would be pleased to give you more information on our proven STEIGER® and show you your profits and advantages.



### RUTHMANNSTEIGER® T 580

	Working height	58,00 m		Total height	3,99 m
	Lifting height	56,00 m		Total length	11,70 m
	Outreach	40,00 m*		Permissible inclination	1°
	Size of working cage	2,30 x 0,90 m		Permissible total weight	26.000 kg
	Maximum working cage size	3,60 x 0,90 m		Range of rotation	500°
	Working cage load	500 kg		Swivelling angle of the jib/RÜSSEL®	180°
* depending on load, angle of rotation and outfit				Swivelling angle of upper boom	180°

All measurements and weights are approximate and refer to the standard basic execution. Technical alterations reserved. STEIGER®, GELENKSTEIGER®, RÜSSEL®, FLEXILOADER® and CARGOLOADER® are registered trademarks of RUTHMANN GmbH & Co. KG

**RUTHMANN GmbH & Co. KG**  
P.O. Box 1263 - 48705 Gescher-Hochmoor - GERMANY  
Fon: +49 28 63 204-0 - Fax: +49 28 63 204-212  
Internet: www.ruthmann.de - E-Mail: export@ruthmann.de